

# HOUSTON INDEPENDENT SCHOOL DISTRICT

---

## **PROGRAMS OF STUDY (POS)** Work Readiness Certification and Industry Credentials

---

2016-2017 Academic Year  
High School Endorsements



# HISD Graduation Requirements

## Endorsements – 26 Credits

- Upon entering 9th grade, a student must indicate (in writing) an endorsement he/she intends to earn.
- Student must be allowed to choose a different endorsement at any time.

## Performance Acknowledgments on Diploma and student transcript

A student may earn a performance acknowledgment for any of the following:

1. For outstanding performance in dual credit courses (12 college hours, GPA of 3.0)
2. For outstanding performance in bilingual and bi-literacy (in two or more languages)
3. For outstanding performance on AP test score of 3+ or IB exam score of 4+
4. For outstanding performance on the PSAT, ACT-Plan, SAT, or ACT
5. For earning a nationally or internationally recognized business or industry certification or license (Government-required credential to practice a profession.)

## Industry Certification

An industry certification is a credential that validates the ability to perform certain basic tasks essential to a particular industry. These certifications are usually created by a particular company such as ACA (Adobe Certified Associate).

## License

A license is a Texas government issued certificate which indicates completion of a training program with a minimum number of hours and successful acquisition of basic skills essential for specific trades or professions. Examples would be a state issued Cosmetology license or a Licensed Pharmacy Technician Trainee.

## Occupational Competency Assessment

An occupational competency assessment is a technical skills assessment created by groups such as the A\*S\*K Business Institute, which argues that the student has mastered job-ready technical knowledge. For example the A\*S\*K Business Fundamentals test that indicates basic skills in Human Resources or NCCER Welding.

# Agriculture, Food, and Natural Resources



## Business and Industry

### Pathway: Animal Science

**Credential (certification): Certified Veterinary Assistant (CVA Level 1)**

Website: [www.tvma.org/Certifications/CVA](http://www.tvma.org/Certifications/CVA)

### Pathway: Horticulture and Resource Management

**Credential (certification): Texas Floral Design - Level 1 Certification**

Website: [www.tsfa.org/floraldesigncertification.html](http://www.tsfa.org/floraldesigncertification.html)



## Architecture & Construction



### Business and Industry

#### Pathway: Construction Technology

**Credential (assessment): NCCER - Construction Technology**

Website: [www.nccer.org/construction-technology](http://www.nccer.org/construction-technology)

#### Pathway: HVAC

**Credential (assessment): NCCER - HVAC**

Website: [www.nccer.org/hvac](http://www.nccer.org/hvac)

#### Pathway: Plumbing

**Credential (assessment): NCCER - Plumbing**

Website: [www.nccer.org/plumbing](http://www.nccer.org/plumbing)

#### Pathway: Structural Design and Engineering

**Credential (certification): AutoCAD Certified Associate**

Website: [www.certiport.com/Portal/desktopdefault.aspx?tabid=667&roleid=101](http://www.certiport.com/Portal/desktopdefault.aspx?tabid=667&roleid=101)

**Credential (certification): Certified SOLIDWORKS Associate (CSWA)**

Website: [www.solidworks.com/sw/education/certification-programs-cad-students.htm](http://www.solidworks.com/sw/education/certification-programs-cad-students.htm)



## Education & Training



### Public Services

#### Pathway: Education and Training

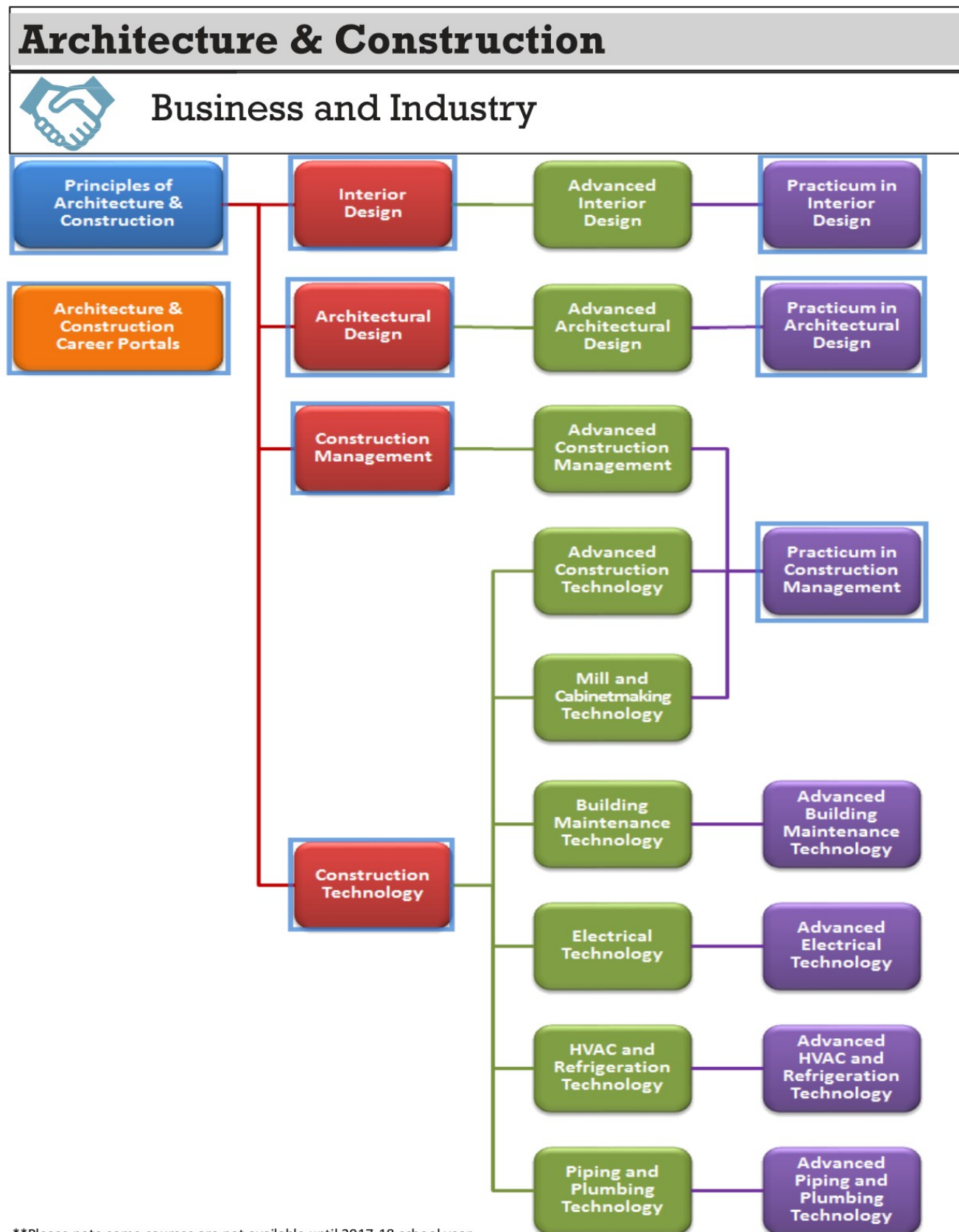
**Credential (certification): Early Childhood Education Assessment & Certification**

Website: [www.aafcs.org/CredentialingCenter/ece.asp](http://www.aafcs.org/CredentialingCenter/ece.asp)

**Credential (certification): Pre-professional Certification in Education Fundamentals**

Website: <http://www.aafcs.org/CredentialingCenter/PrePAC.asp>





\*\*Please note some courses are not available until 2017-18 school year.

# Finance



## Business and Industry

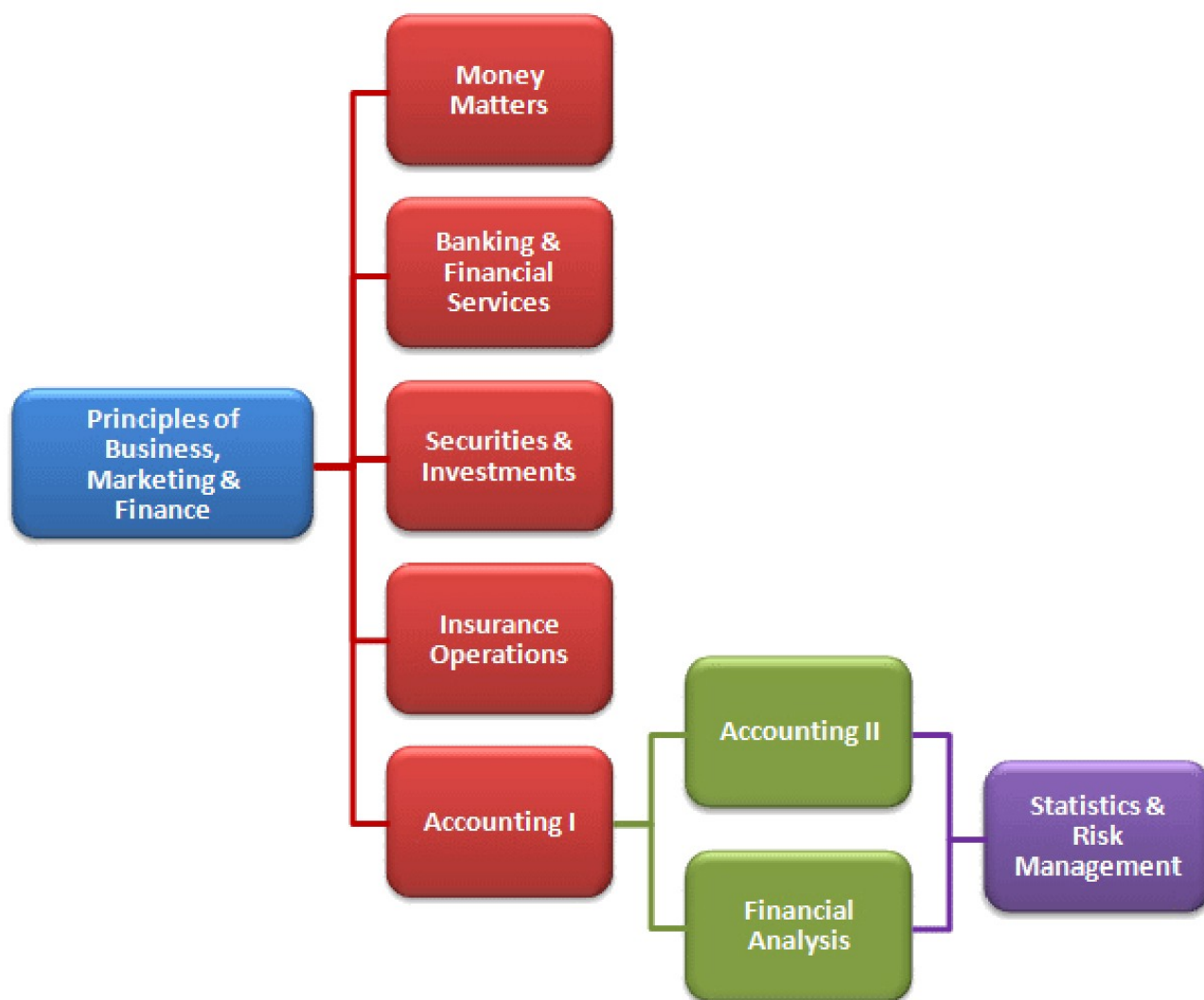
### Pathway: Banking and Securities

#### Credential (assessment): A\*S\*K Finance

Website: [www.askinstitute.org/index.php?option=com\\_content&view=category&layout=blog&id=37&Itemid=57](http://www.askinstitute.org/index.php?option=com_content&view=category&layout=blog&id=37&Itemid=57)

#### Credential (certification): QuickBooks Certified User

Website: [www.certipoint.com/Portal/desktopdefault.aspx?tabid=668&roleid=101](http://www.certipoint.com/Portal/desktopdefault.aspx?tabid=668&roleid=101)



# Business Management & Administration



## Business and Industry

### Pathway: Business Management

**Credential (certification): Microsoft Office Certified Master**

Website: [www.certipoint.com/Portal/desktopdefault.aspx?page=common/pagelibrary/mos\\_master.html](http://www.certipoint.com/Portal/desktopdefault.aspx?page=common/pagelibrary/mos_master.html)

**Credential (certification): NOCTI Business Solutions**

Website: <http://noctibusiness.com/certifications/>

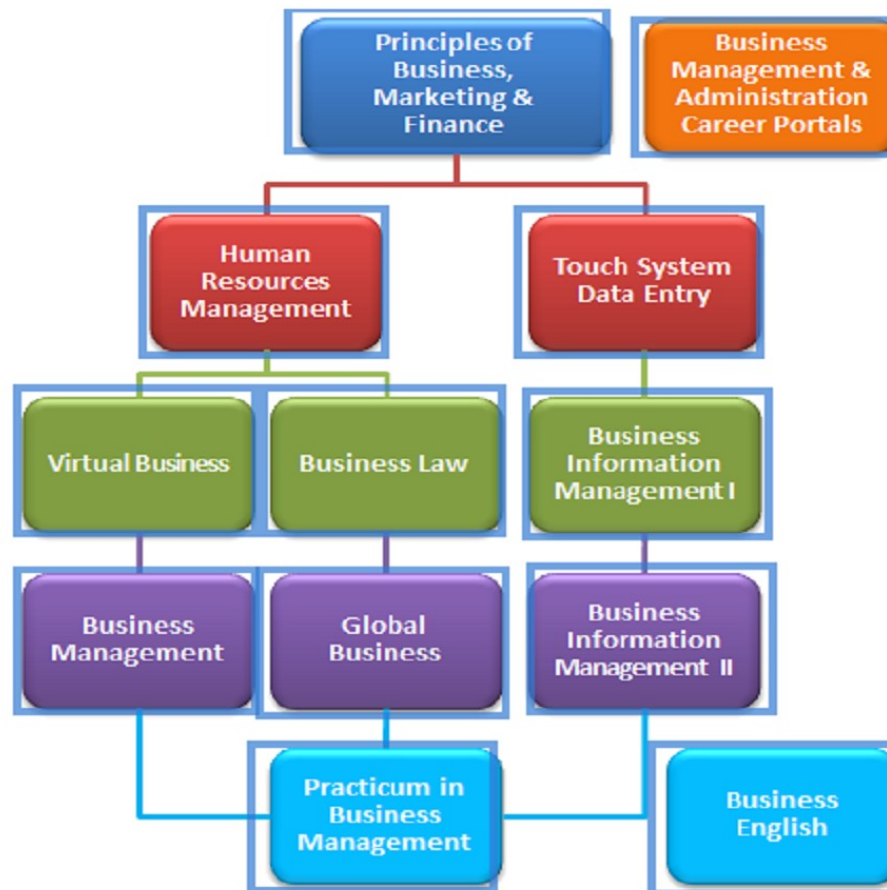
**Credential (certification): Sales Force**

Website: <http://certification.salesforce.com/>

### Pathway: Human Resources

**Credential (assessment): A\*S\*K Business Fundamentals**

Website: [www.askinstitute.org/index.php?option=com\\_content&view=category&layout=blog&id=37&Itemid=57](http://www.askinstitute.org/index.php?option=com_content&view=category&layout=blog&id=37&Itemid=57)



\*\*Please note some courses are not available until 2017-18 school year.



# Arts, A/V Production & Communication



## Business and Industry

**Pathway: Audio/Video Production**

**Pathway: Graphic Design and Production**

**Pathway: Printing and Imaging**

**Credential (certification): Adobe® Certified Associate (ACA) - Video Communication**

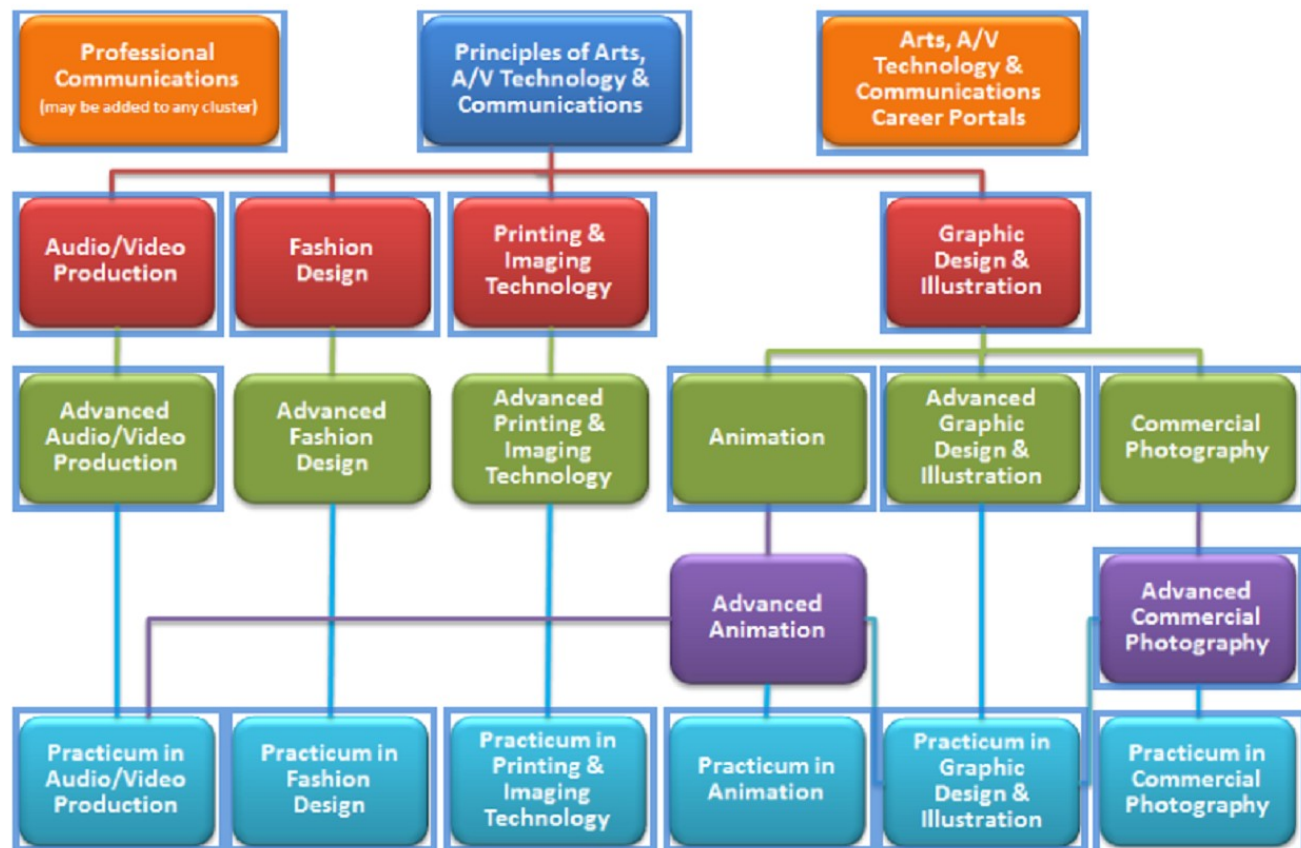
Website: <http://www.certiport.com/Portal/desktopdefault.aspx?tabid=666&roleid=101>

**Credential (certification): Adobe® Certified Associate (ACA) - Visual Communication**

Website: <http://www.certiport.com/Portal/desktopdefault.aspx?tabid=666&roleid=101>

**Credential (certification): Apple Final Cut Pro**

Website: <http://training.apple.com/certification/proapps>

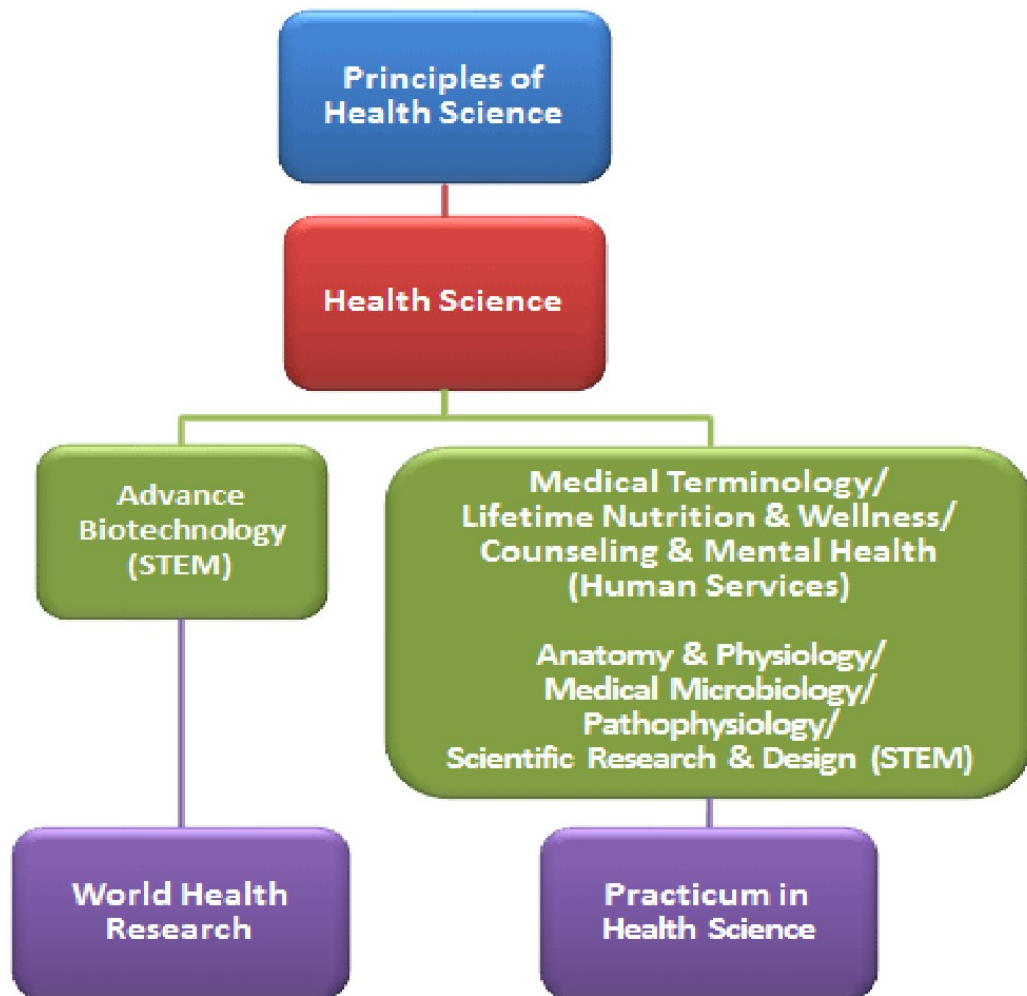


**\*\*Please note some courses are not available until 2017-18 school year.**

# Health Science



## Public Services



# Human Services

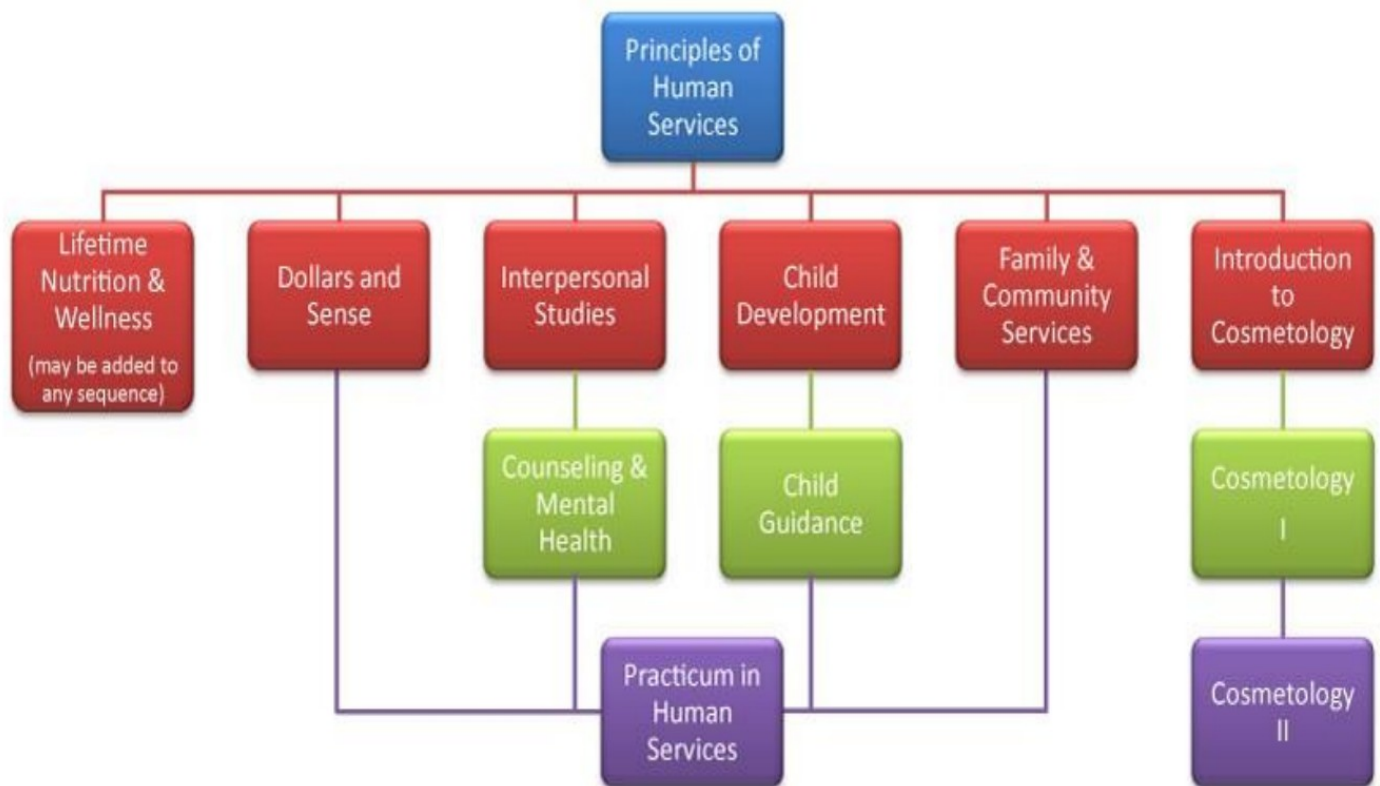


## Business and Industry

### Pathway: Cosmetology

**Credential (license): Cosmetology - Operator License**

Website: [www.tdlr.texas.gov/cosmet/cosmet.htm](http://www.tdlr.texas.gov/cosmet/cosmet.htm)



# Hospitality & Tourism



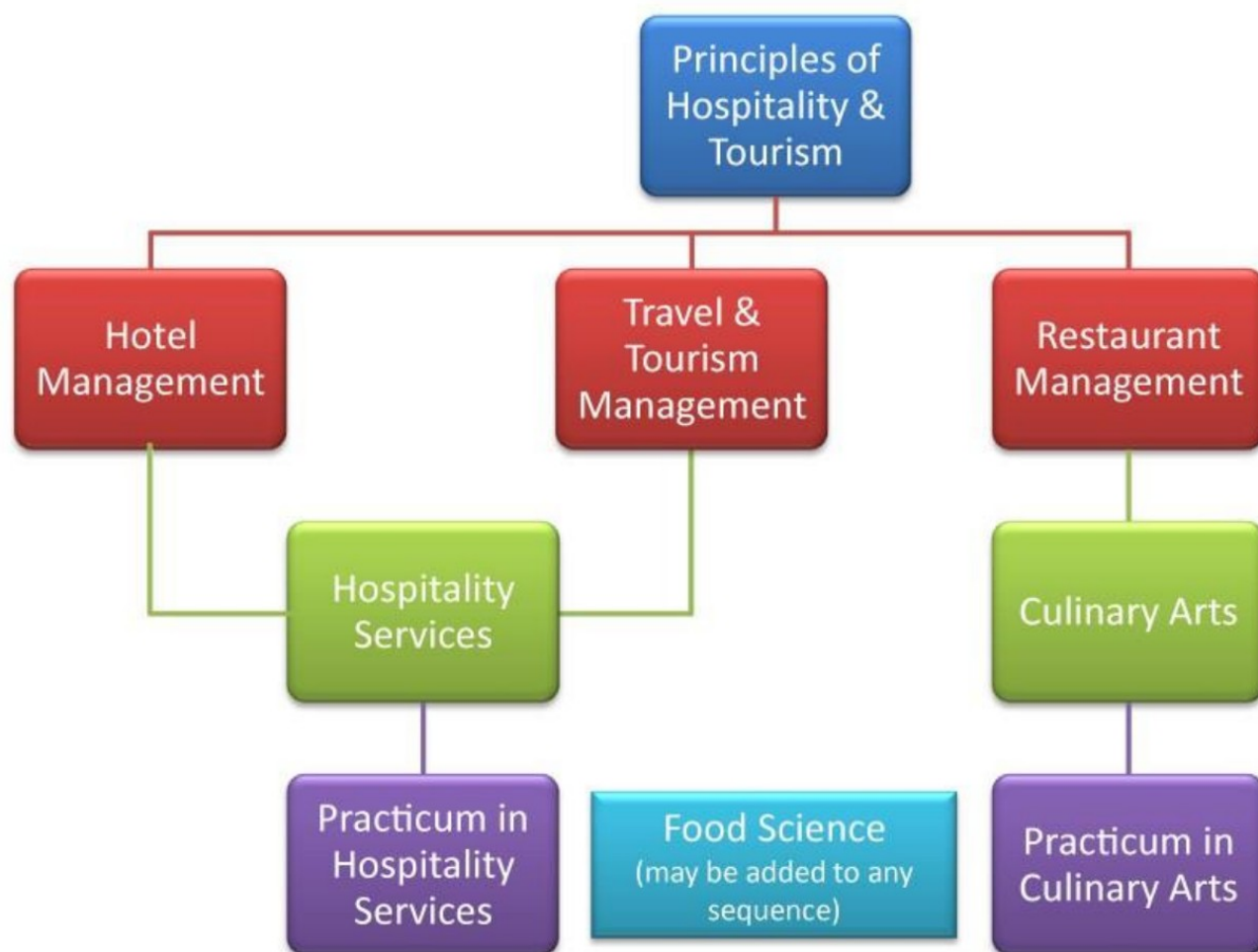
## Business and Industry

**Pathway: Culinary Arts**

**Pathway: Hotel and Restaurant Management**

**Credential (assessment): ServSafe Manager**

Website: [https://www.servsafe.com/manager/ecert\\_faqs](https://www.servsafe.com/manager/ecert_faqs)





## Health Science



### Public Services

#### Pathway: Biomedical Pathway: Health Science

**Credential (certification): Nurse Assisting Assessment**

Website: [www.workforcereadysystem.org/technical\\_areas.shtml](http://www.workforcereadysystem.org/technical_areas.shtml)

**Credential (certification): National Entry Level Dental Assistant (NELDA)**

Website: <http://www.danb.org/en/Become-Certified/Exams-and-Certifications/NELDA.aspx>

#### Pathway: Radiology Technology

**Credential (certification): Certified Clinical Medical Assistant (CCMA)**

Website: [www.nhanow.com/clinical-medical-assistant.aspx](http://www.nhanow.com/clinical-medical-assistant.aspx)

**Credential (certification): Phlebotomy Technician Certification (CPT)**

Website: [www.nhanow.com/phlebotomy-technician.aspx](http://www.nhanow.com/phlebotomy-technician.aspx)

**Credential (certification): Certified Patient Care Technician/Assistant (CPCT/A)**

Website: [www.nhanow.com/patient-care-technician.aspx](http://www.nhanow.com/patient-care-technician.aspx)

#### Pathway: Pharmacy Technology

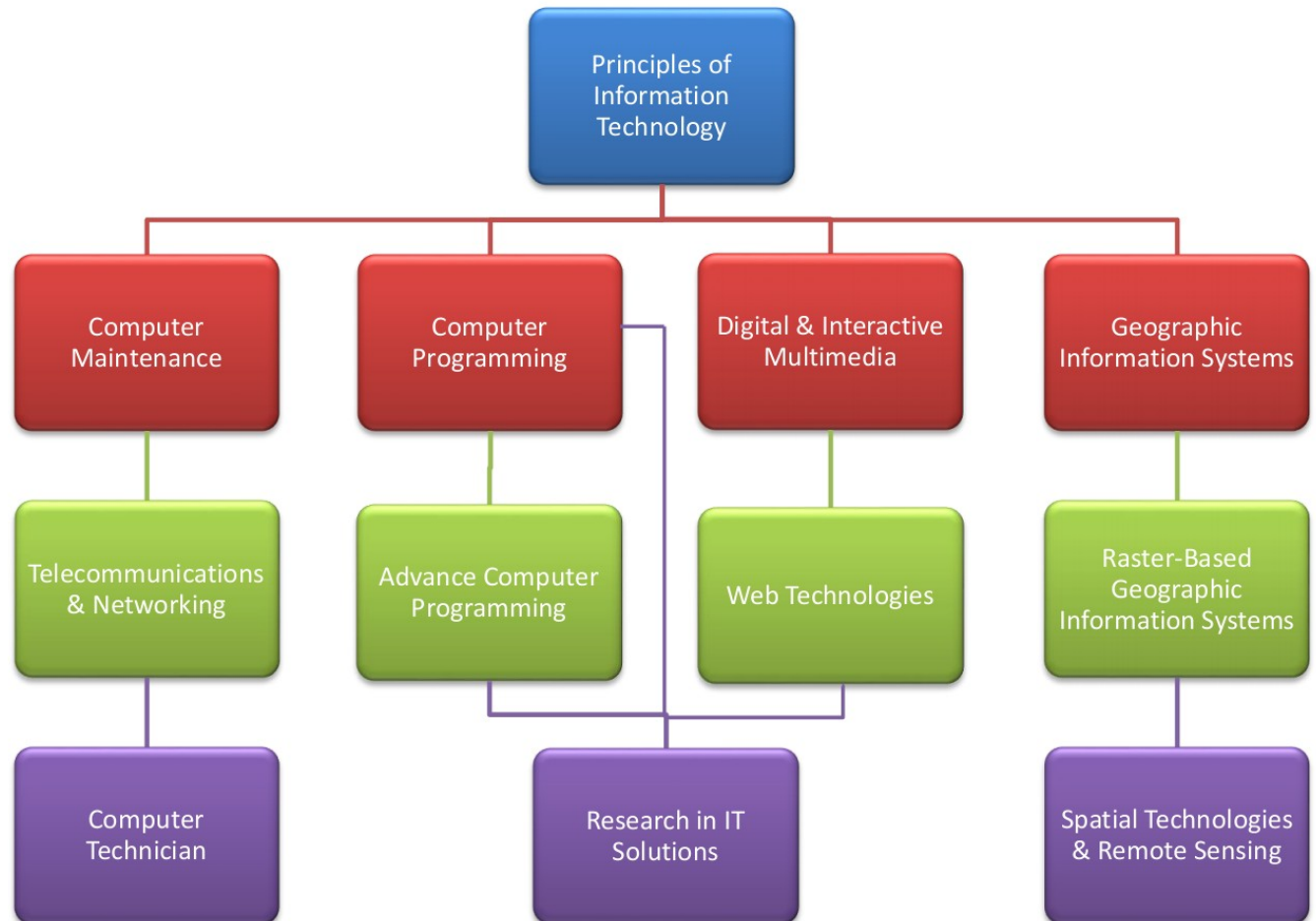
**Credential (assessment): Pharmacy Technician Trainee**

Website: [www.tsbp.state.tx.us/techtrainee.htm](http://www.tsbp.state.tx.us/techtrainee.htm)

# Information Technology



## Business and Industry





# Marketing



## Business and Industry

### Pathway: Fashion Marketing

**Credential (assessment): A\*S\*K Marketing Fundamentals**

Website: [www.askinstitute.org/index.php?option=com\\_content&view=category&layout=blog&id=37&Itemid=57](http://www.askinstitute.org/index.php?option=com_content&view=category&layout=blog&id=37&Itemid=57)

### Pathway: Retail Management

**Credential (assessment): A\*S\*K Entrepreneurship**

Website: [www.askinstitute.org/index.php?option=com\\_content&view=category&layout=blog&id=37&Itemid=57](http://www.askinstitute.org/index.php?option=com_content&view=category&layout=blog&id=37&Itemid=57)

**Credential (certification): National Retail Federation (NRF)**

Website: <https://nrf.com/career-center/certifications-and-training>





# Law, Public Safety, Corrections & Security



## Public Services

### Pathway: Court Systems

### Pathway: Firefighter

**Credential (license): Emergency Medical Technician (EMT)**

Website: <http://www.nremt.org/>

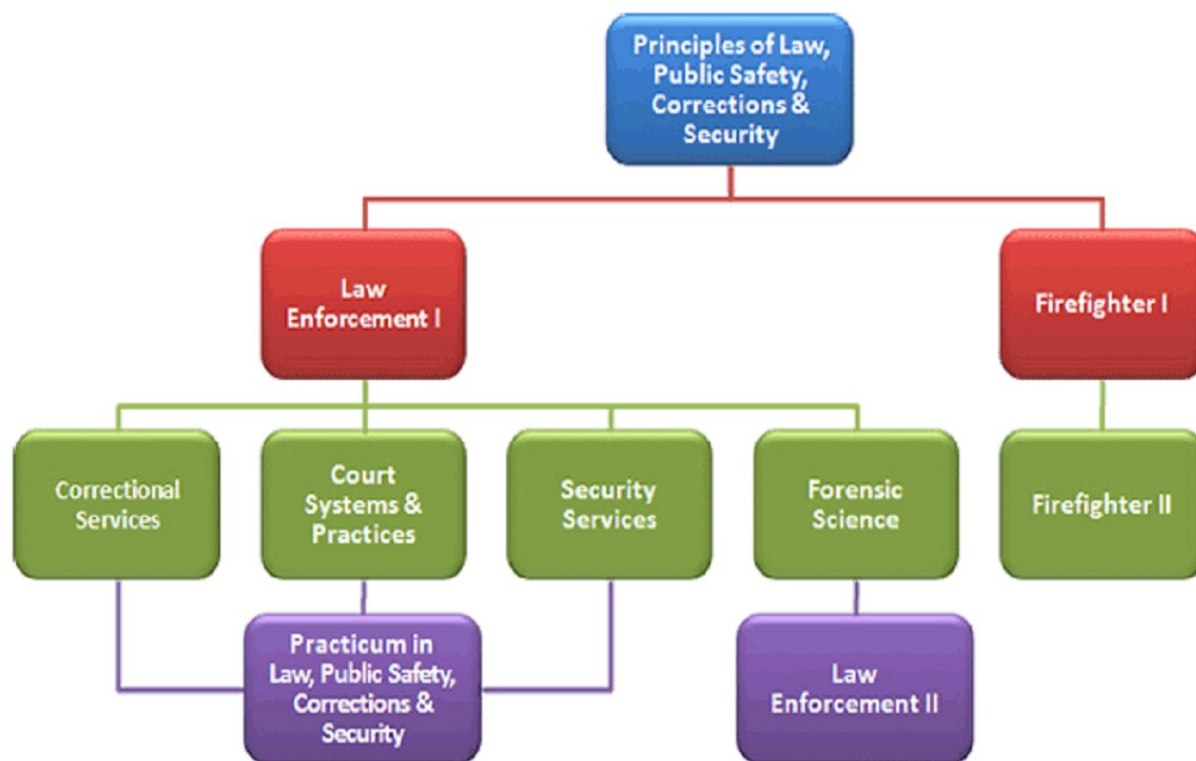
Website: [http://www.tcfp.texas.gov/certification/certification\\_overview.asp](http://www.tcfp.texas.gov/certification/certification_overview.asp)

**Credential (license): Texas Commission on Fire Protection**

Website: [http://www.tcfp.texas.gov/certification/certification\\_overview.asp](http://www.tcfp.texas.gov/certification/certification_overview.asp)

### Pathway: Government and Public Administration

### Pathway: Law Enforcement and Corrections



# Manufacturing



## Business and Industry

### Pathway: Engineering

**Credential (certification): Autodesk Certified User**

Website: [www.certipoint.com/Portal/desktopdefault.aspx?tabid=667&roleid=101](http://www.certipoint.com/Portal/desktopdefault.aspx?tabid=667&roleid=101)

**Credential (certification): Certified SOLIDWORKS Associate (CSWA)**

Website: [www.solidworks.com/sw/education/certification-programs-cad-students.htm](http://www.solidworks.com/sw/education/certification-programs-cad-students.htm)

### Pathway: Precision Metal Manufacturing

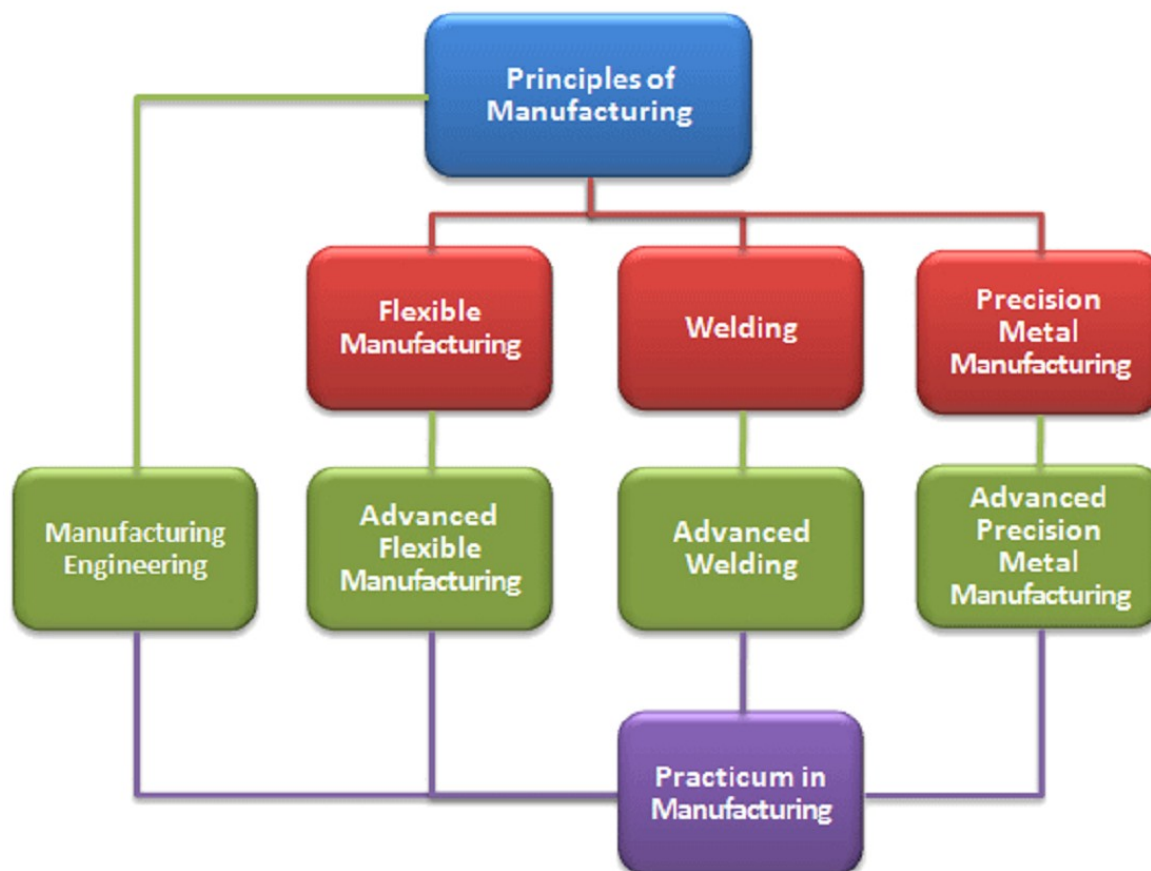
### Pathway: Welding

**Credential (assessment): NCCER - Welding**

Website: [www.nccer.org/welding?pID=86](http://www.nccer.org/welding?pID=86)

**Credential (Certification): American Welding Society (AWS)**

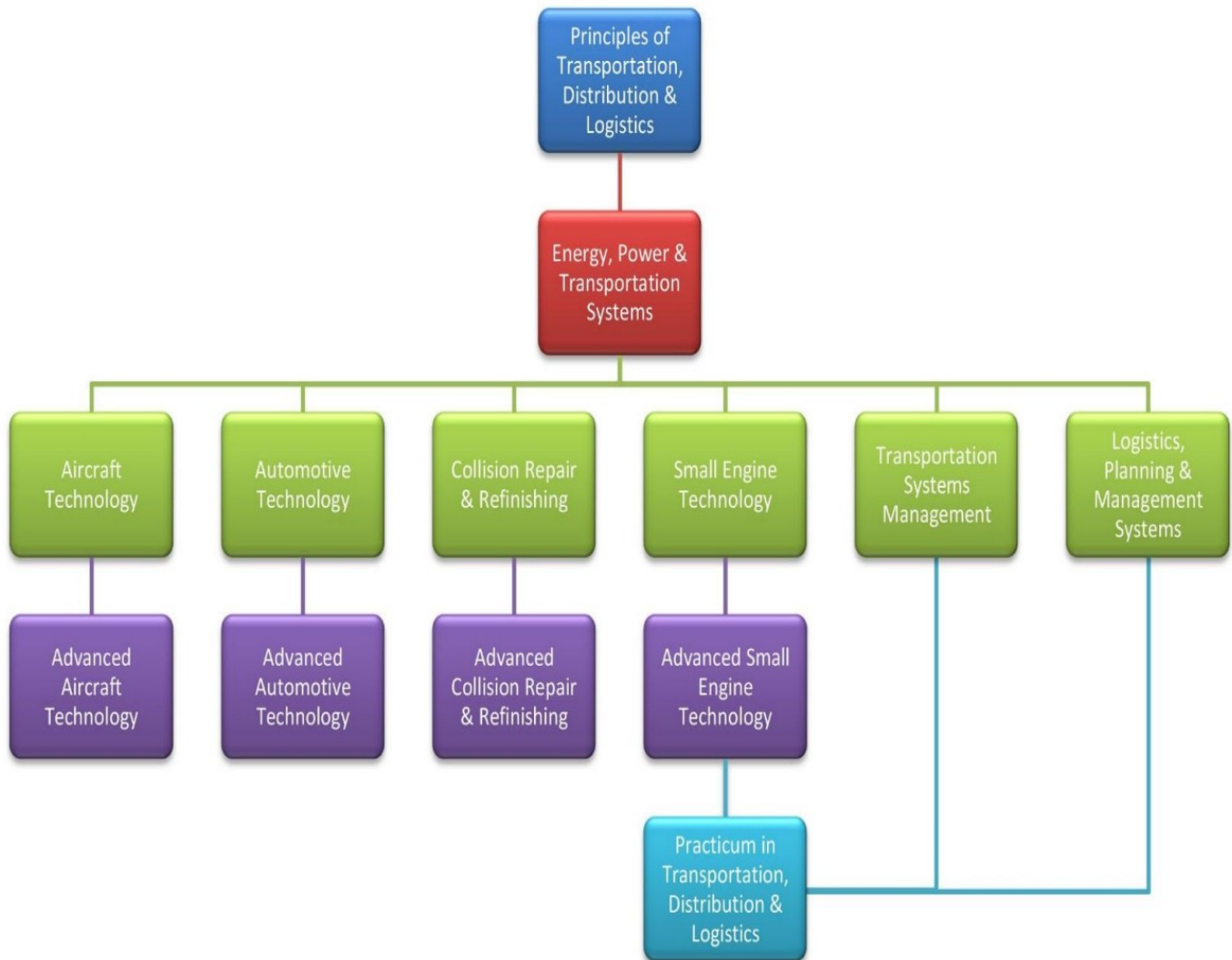
Website: <http://www.aws.org/certification>



# Transportation, Distribution & Logistics



## Business and Industry



# STEM



## STEM

### Pathway: Biotech

**Credential (certification): Certified Clinical Medical Assistant (CCMA)**

Website: [www.nhanow.com/clinical-medical-assistant.aspx](http://www.nhanow.com/clinical-medical-assistant.aspx)

### Pathway: Engineering

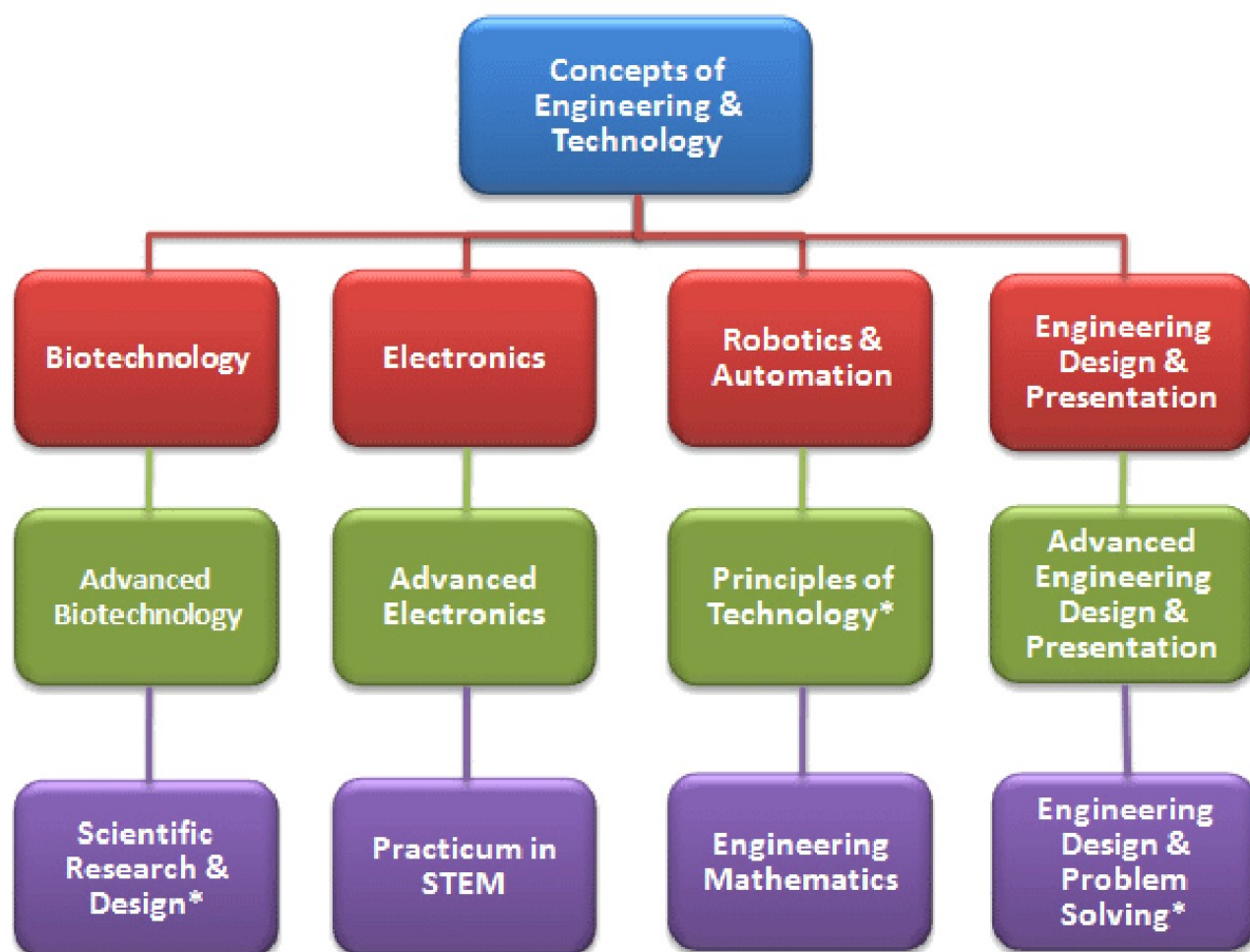
### Pathway: Robotics

**Credential (certification): Autodesk Certified User**

Website: [www.certipoint.com/Portal/desktopdefault.aspx?tabid=667&roleid=101](http://www.certipoint.com/Portal/desktopdefault.aspx?tabid=667&roleid=101)

**Credential (certification): Certified SOLIDWORKS Associate (CSWA)**

Website: [www.solidworks.com/sw/education/certification-programs-cad-students.htm](http://www.solidworks.com/sw/education/certification-programs-cad-students.htm)



\*Course approved for science credit



# Transportation, Distribution & Logistics



## Business and Industry

### Pathway: Aircraft Technology

**Credential (certification): FAA Airframe & Powerplant Technician**

Website: <http://www.miat.edu/programs/aviation/airframe-powerplant-technician/>

### Pathway: Automotive Technology

**Credential (assessment): ASE – Automatic Transmission/ Transaxle (A2)**

Website: [www.asestudentcertification.com/index.html](http://www.asestudentcertification.com/index.html)

**Credential (assessment): ASE - Brakes (A5)**

Website: [www.asestudentcertification.com/index.html](http://www.asestudentcertification.com/index.html)

**Credential (assessment): ASE - Electronic/Electrical Systems (A6)**

Website: [www.asestudentcertification.com/index.html](http://www.asestudentcertification.com/index.html)

**Credential (assessment): ASE – Engine Performance (A8)**

Website: [www.asestudentcertification.com/index.html](http://www.asestudentcertification.com/index.html)

**Credential (assessment): ASE - Engine Repair (A1)**

Website: [www.asestudentcertification.com/index.html](http://www.asestudentcertification.com/index.html)

**Credential (assessment): ASE - Heating and A/C (A7)**

Website: [www.asestudentcertification.com/index.html](http://www.asestudentcertification.com/index.html)

**Credential (assessment): ASE – Suspension and Steering (A4)**

Website: [www.asestudentcertification.com/index.html](http://www.asestudentcertification.com/index.html)

### Pathway: Logistics and Global Supply

### Pathway: Logistics and Global Supply (Maritime)

**Credential (assessment): Certified Logistics Associate (CLA)**

Website: <http://www.msscusa.org/certified-logistics-technician-clt/>

**Credential (assessment): Certified Logistics Technician (CLT)**

Website: [www.asestudentcertification.com/index.html](http://www.asestudentcertification.com/index.html)

**Credential (assessment): Global Logistics Associate (GLA)**

Website: <http://www.apics.org/careers-education-professional-development/certification/logistics/gla>

# Information Technology



## Business and Industry

### Pathway: Computer Maintenance

**Credential (certification): Bicsi**

Website: <https://www.bicsi.org/single.aspx?l=2172>

**Credential (certification): CompTIA Strata**

Website: [www.certipoint.com/Portal/desktopdefault.aspx?tabid=670&roleid=101](http://www.certipoint.com/Portal/desktopdefault.aspx?tabid=670&roleid=101)

**Credential (certification): CompTIA A+**

Website: <http://certification.comptia.org/getCertified/certifications/a.aspx>

**Credential (certification): CompTIA Network+**

Website: <http://certification.comptia.org/getCertified/certifications/network.aspx>

**Credential (certification): CompTIA Security+**

Website: <http://certification.comptia.org/getCertified/certifications/security.aspx>

### Pathway: Computer Programming

**Credential (certification): CIW Web Security Associate**

Website: [www.ciwcertified.com/Certifications/Web\\_Security\\_Series/security\\_associate.php](http://www.ciwcertified.com/Certifications/Web_Security_Series/security_associate.php)

**Credential (certification): CIW Internet Business Associate**

Website: [www.ciwcertified.com/Certifications/Web\\_Foundations\\_Series/iba.php](http://www.ciwcertified.com/Certifications/Web_Foundations_Series/iba.php)

**Credential (certification): Microsoft Office Specialist (MOS) Word, PowerPoint, Excel, & Access**

Website: <http://www.certipoint.com/portal/desktopdefault.aspx?page=common/pagelibrary/mos2016/mos-2016/mos-exams.html>

### Pathway: Digital Media and Web Technologies

**Credential (certification): Adobe® Certified Associate (ACA) - Web Authoring**

Website: [www.certipoint.com/Portal/desktopdefault.aspx?page=common/pagelibrary/adobe\\_DW.html](http://www.certipoint.com/Portal/desktopdefault.aspx?page=common/pagelibrary/adobe_DW.html)

**Credential (certification): Adobe® Certified Associate (ACA) - Interactive Media**

Website: [www.certipoint.com/Portal/desktopdefault.aspx?page=common/pagelibrary/adobe\\_FL.html](http://www.certipoint.com/Portal/desktopdefault.aspx?page=common/pagelibrary/adobe_FL.html)

**Credential (certification): CIW Web Design Specialist**

Website: [www.ciwcertified.com/Certifications/Web\\_Design\\_Series/design.php](http://www.ciwcertified.com/Certifications/Web_Design_Series/design.php)

### Pathway: Geographic Information System

**Credential (certification): STARS Certification**

Website: [www.digitalquest.com/stars.html](http://www.digitalquest.com/stars.html)

**Credential (certification): SPACE Certification**

Website: [www.digitalquest.com/space.html](http://www.digitalquest.com/space.html)

**Credential (certification): Esri Technical Certification - Desktop**

Website: [www.esri.com/training/main/certification/certification-exams](http://www.esri.com/training/main/certification/certification-exams)